

Symbol of Kirameki
Kamesan
Volunteer network
in Kameyama.

KIFA NEWS

Kameyama International Friendship Association
亀山国際交流の会

英語版
2002年1月

Vol. 2
Jan. 2002

How are you? This is KIFA's 2nd publication.

KIFA is publishing a monthly report in English and Portuguese.

There are so many foreigners here in Kameyama, thinking of their number (1,720) of inhabitants (40,540). We are happy if it is some help for you.

It's becoming very cold these days. Please take care of yourselves, not to catch a bad cold.

"KAMEYAMA OHICHI" - GENERAL MARKET

(亀山大市)

There are many shops on the main street from Jan. 25 (Fri) to 28th (Mon).

Please come to enjoy special shops, events, some famous and traditional articles of Mie-ken, a free market, ...etc.

Kameyama Commercial Union Office (Tel. 2-1331)



LONG- DISTANCE RELAY RACE

駅伝大会、参加チーム募集



The Association of Physical Education of Kameyama City is holding a Long-Distance Relay

on the following date. All those interested in participating are welcome.

Date : February 17, (Sun.), 8:30 AM (Light rain, it will be carried on as scheduled. In case of postponement, it will be held on February 24th,

Sun.)

Start : Nishino Park

Classification : (1) Corporate Teams (2) Community Teams (3) Individual Teams

Arrangement : Every team will have 7 runners, 4 replacements, 1 manager

Total --- Each team up to 12 people

Participation fee : Each team ¥2,000 (including sports insurance)

Application form should be submitted before February 4th (Mon.).

Fill out the application form and hand it in to the Department of Education, Social Education Section. Application forms will be given upon request at the department.

General Consultation in February 各種相談

Human Rights Consultation 人権相談

Consulting about human rights 7th (Mon) from 13:00 to 15:00

In the “shimin taiwa shitu” room at city hall.

Job Consultation 職業相談

General consulting about finding a job matter 13th(Wed) from 14:00 to 16:00

In the “shimin taiwa shitu” room at city hall.

Legal Consultation 法律相談

Consulting by a lawyer 18th (Thur) from 13:30 to 16:00

In the “shimin taiwa shitu” room at city hall.

You have to make an appointment with the Shiminka-section. (Phone :2-1111)

Physical Examinations, Consultation and Lectures.

1 and half year old infant- examination(born in July, 2000)保健 (検診・健康相談) 1歳6ヶ月児検診

Please bring your “mother and child” health booklet and questionnaire.

28th (Thu) from 13:30 in General Health and Welfare Center

3 years old infant- examination (born in August, 1998) 3歳児検診

Please bring your mother and child health booklet and questionnaire, a urine sample and medical checklist.

21th (Thu) from 13:00 in General Health and Welfare Center. (Phone :4-3316)

Practitioner on Duty during holidays in February 休日の当番医

Feb.3 (Sun) TANIGUCHI Internal diseases clinic (TEL 2-8710)

Feb.10th (Sun) NISHIKAWA ophthalmological clinic (TEL 2-0022)

SEKI clinic (TEL 05959-6-2220)

Feb.11th (Mon. National Holiday) KAMEYAMA clinic (TEL 2-0015)

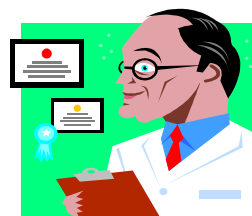
Feb.24th (Sun) MIYAMURA obstetrician and gynaecology clinic (TEL 2-5151)

Consultation hours from 13:00 to 21:00

This information, especially the doctor on duty, is sometimes subject to change. Please call before visiting.

The doctors on duty follow a rotation system. In some cases a doctor does not meet the field ,so ,it is not an absolutely sure system.

You may get medical examination and treatment in consultation hours. For particulars please call the KAMEYAMA area emergency medical information center (Phone 2-1199) or city office. (2-1111).



EXAMINATION FOR CANCER OF STOMACH, UTERUS AND BREASTS (胃ガン乳ガン子宮ガン検診)

Stomach Cancer Examination

Date :Feb 6th (Wed) from 9:00 to 11:00

Place: General Health and Welfare Center (Just east of Hospital IRYOU-Center)

Detail: X-ray examination of stomach

Accepting :40 people

Examinee: Over 40 years old (KAMEYAMA residents)

Cost: 600 yen (Free of charge for people over 70 years of age)

Note : Those who have removed stomach surgery can not receive the examination.



Uterus and Breasts --- Date : Feb. 7th. (Thu.) from 10:00 to 11:00 --- only for breasts
from 12:50 to 13:50 --- both breasts and uterus

Place : General Health and Welfare Center (just east of Hospital Iryo Center)

Cost : breasts --- ¥600 for women over 30 (limit 65 people),by supersonic waves

uterus --- ¥500 for women over 30 (limit 50 people),by examination of cellular tissue.

* free for women over 70

* You must show your “Residents Registration Card” to have these examinations.

* You have to make an appointment with the Health and Welfare Center (tel. 4-3316)
starting Jan. 4th. (Fri.)

THE CLEANING FEE FOR HUMAN WASTE DISPOSAL WILL CHANGE

し尿くみ取り料金の変更

The cleaning fee for human waste disposal will change beginning February 1st, 2002.

Keep your receipt of the cleaning fee.

* Up to 144 liters --- ¥1,760 (including taxes)

* Over 144 liters --- ¥220 for every additional 18 liters (including taxes)

Cleaning Companies :

Kameyama Nozaki Seisousha Co. Tel 2-0822

3-21 Kita-Kashima, Kameyama

Toyoda Eiseisha Co. Tel 2-1738

1780 Anoda-cho, Kameyama

Idagawa Seisou Co. Tel 2-2006

67-7 Wada-cho, Kameyama

ELECTION

FOR KAMEYAMA CITY MAYOR AND MUNICIPAL ASSEMBLY MEMBERS WILL BE HELD ON FEBRUARY 3RD (SUN).

亀山市長、市議会議員の補欠選挙

Go away!

Welcome!



SETSUBUN 節分

Here in Japan, February 3rd is the day we call "SETSUBUN". It is the day before the beginning of spring. On this day we have the ancient tradition of throwing beans in the house, while saying the words "FUKU WA UCHI, ONI WA SOTO", meaning "fortune in, evil out".

In doing so, we expel the evil spirits out of the house, and pray for the happiness of our family members. As soy beans are also good for our health, we roast them and everyone eats a number equal to one's age.

Gymnasium Public Hours of Operation for February

(2月の体育館の公開)

Nishino Park [Nishino kouen]
phone 2-1144

Tennis

4,11,18,25 9:00~21:00

Tennis

5,12,19,26 9:00~21:00

Basket ball, Volleyball

6,13,20,27 9:00~21:00

Badminton

7,14,21,28 9:00~21:00

Table tennis, Badminton

1,2,8,9,15,16,22,23 9:00~21:00

3,10,17,24 9:00~17:00

Indyiaka, Badminton

1,5,8,12,15,19,22,26 9:00~21:00

Table tennis,

2,9,16,23 9:00~21:00

4,11,18,25 9:00~21:00



Higashino park [Higashino kouen]

Phone 3-1888 3-1889

Tennis

6,13,20,27 9:00~21:00

Volleyball

2,9,16,23 13:00~21:00

7,14,21,28 9:00~21:00

Basket ball

3,10,17,24 9:00~21:00

Indyiaka, Badminton

1,5,8,12,15,19,22,26 9:00~21:00

Table tennis,

2,9,16,23 9:00~21:00

4,11,18,25 9:00~21:00

※Entrance Fee (Adults) ¥100 yen

Junior High School Students and under
¥50yen

※This information is subject to change.

※The Gymnasium is closed from 12~13:00
and from 17~18:00

SAFETY OF OUR CITY - TEL. NO. "110"

(わが街の安心)

January 10 was 110 Day. 110 is emergency services number in case of murder, burglar, theft or traffic accidents. Please calmly state the following 5 points when you call 110.

1. What happened? (= Nani?)
--- ex) theft, fight, accident
 2. When, Where? (= Itsu, Dokode?)
--- time, place, target
 3. How? (= Donna koto?) --- situation,
 4. Who is the offender? (= Hannin wa?) --- Description, License plate number
 5. Your name and address (= Anata no namae to jyusho) ---Tel No, relation to the case
- FAX "110" --- 059-229-0110



SUBSIDY FOR INSTALLING CABLE TV

ケーブルTVの補助金交付について

- * Subsidy of ¥15,000 offered --- Residents of Kameyama City applying for the installation of cable TV will be given a subsidy of ¥15,000, as aid for the application and services expenses.
- * Requirements --- The subsidy will be given only to residents of Kameyama City who are applying for the installation of cable TV. (Those who are installing only the Internet can not apply for the subsidy.)

Period of application : until March 31, 2003

Amount : ¥15,000

Submit application to : Section Kikaku-ka, Kameyama City Office

Others : More information about the subsidy will be given in the public magazine, "Kameyama Kohou" published on February 1st. With the magazine, pamphlets and application forms will be delivered to every home. Those applying should submit their application to the section Kikaku-ka, ZTV Kameyama branch office, or stores affiliated with the electrical appliances association.

Dear Readers,編集後記

We hope that every foreigner living in our town got this information.

We would like to thank the people who have made efforts to translate this report in English and Portuguese, in order to reach foreigners who live or work here in Kameyama.

If you have any suggestions or ideas, or if you are interested in KIFA, please contact us.
(Mr. Tanaka Tel. 090-4083-7929)

Published by KIFA . “Kameyama Internacional Friendship Association”

亀山国際交流の会

Provided with collaboration of City Hall of Kameyama,
Social Services Section and Planning Section

協力 : 亀山市役所 市民課・企画課